

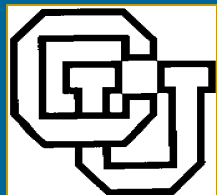
---

# Institute of Behavioral Science

## Program Plan

---

CVEN 4830 Presentation  
September 4, 2008



---

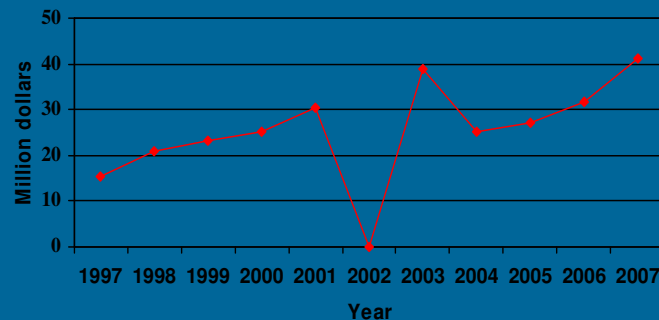
# Introduction

- Background
  - Goals and Objectives
  - Existing Conditions
  - Planned Spaces
  - Primary Plan Components
  - Other concerns
-

# Background

## ■ History

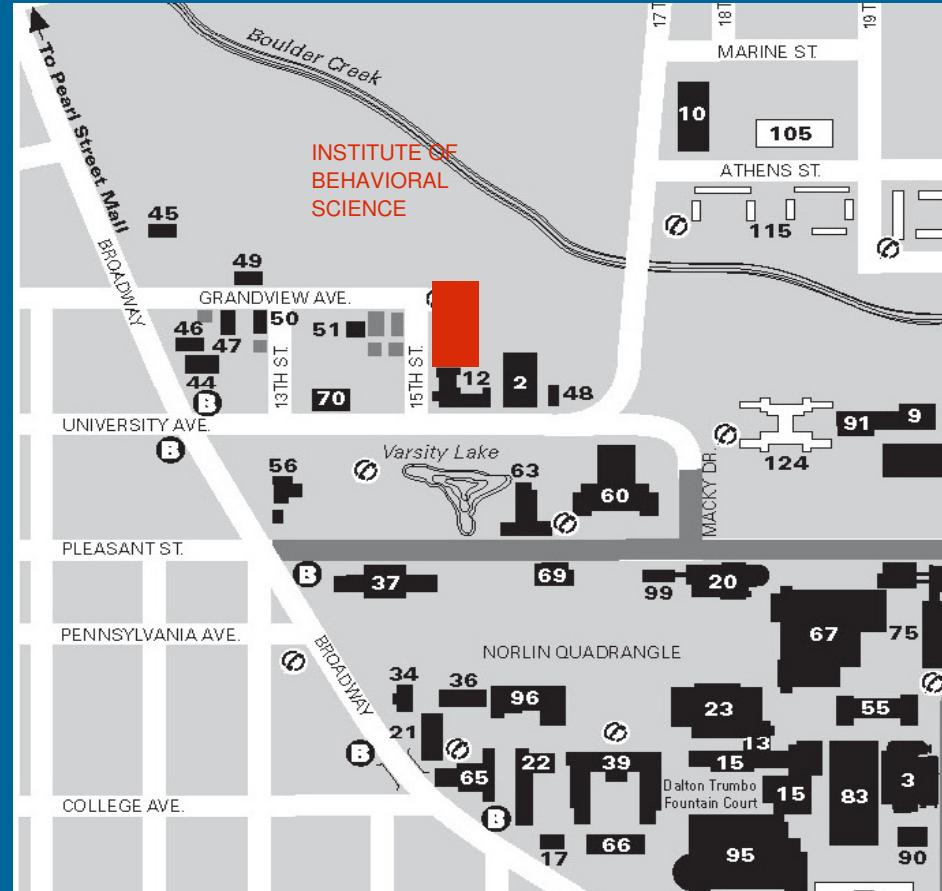
- Five decades of research and collaboration on problems of societal concern
- Five programs: Population, Political and Economic Change, Environment and Society, Problem Behavior Programs, and Health and Society Program.



- Housed in eight sub-standard buildings in Grandview Terrace and two floors of a leased office building in downtown Boulder
- The initial proposal was made in 2002

# Background

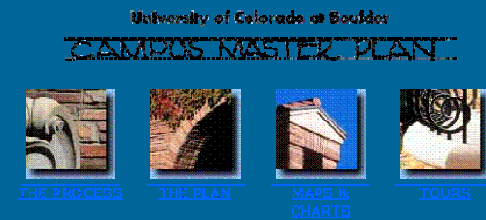
- Location



# Goals and Objectives

## ■ Campus Master Plan

- Provide high-quality facilities to meet needs
- Preserve and enhance traditional beauty of campus
- Acquire and use land wisely
- Efficient, pleasing, and safe infrastructure
- Accommodate projected enrollment growth
- Facilitate increased graduate student enrollment
- Retain 10 min. class change



Campus Master Plan  
Approved  
Board of Regents, University of Colorado, February 2000  
Colorado Commission on Higher Education, March 2001

Colorado  
University of Colorado at Boulder  
[Master Plan Site Design](#)

# Goals and Objectives

## ■ IBS

- Committed to cutting edge interdisciplinary collaborative research on problems of societal concern
- Dissemination of information about research to undergraduate, and pre- and post doctoral students
- Formal training to supplement students with advanced degrees  
Certificate Programs in Demography and Applied Behavioral
- Impart knowledge across a comprehensive range of disciplines –  
CIRES, Behavioral Genetics, UCDHSC, SURF, UROP, Honors



# Existing Conditions

- Building Deficiencies
  - Multiple buildings most circa 1900
  - Inefficient and inadequate spaces, sizes, and configuration
  - Inadequate heating and cooling
  - Insufficient power, general, and task lighting
  - Old and failing roofs, windows, doors
  - Minimal insulation and fire protection
  - Inadequate accessibility at entries, public circulation, restrooms, doorways, and vertical circulation



# Planned Spaces

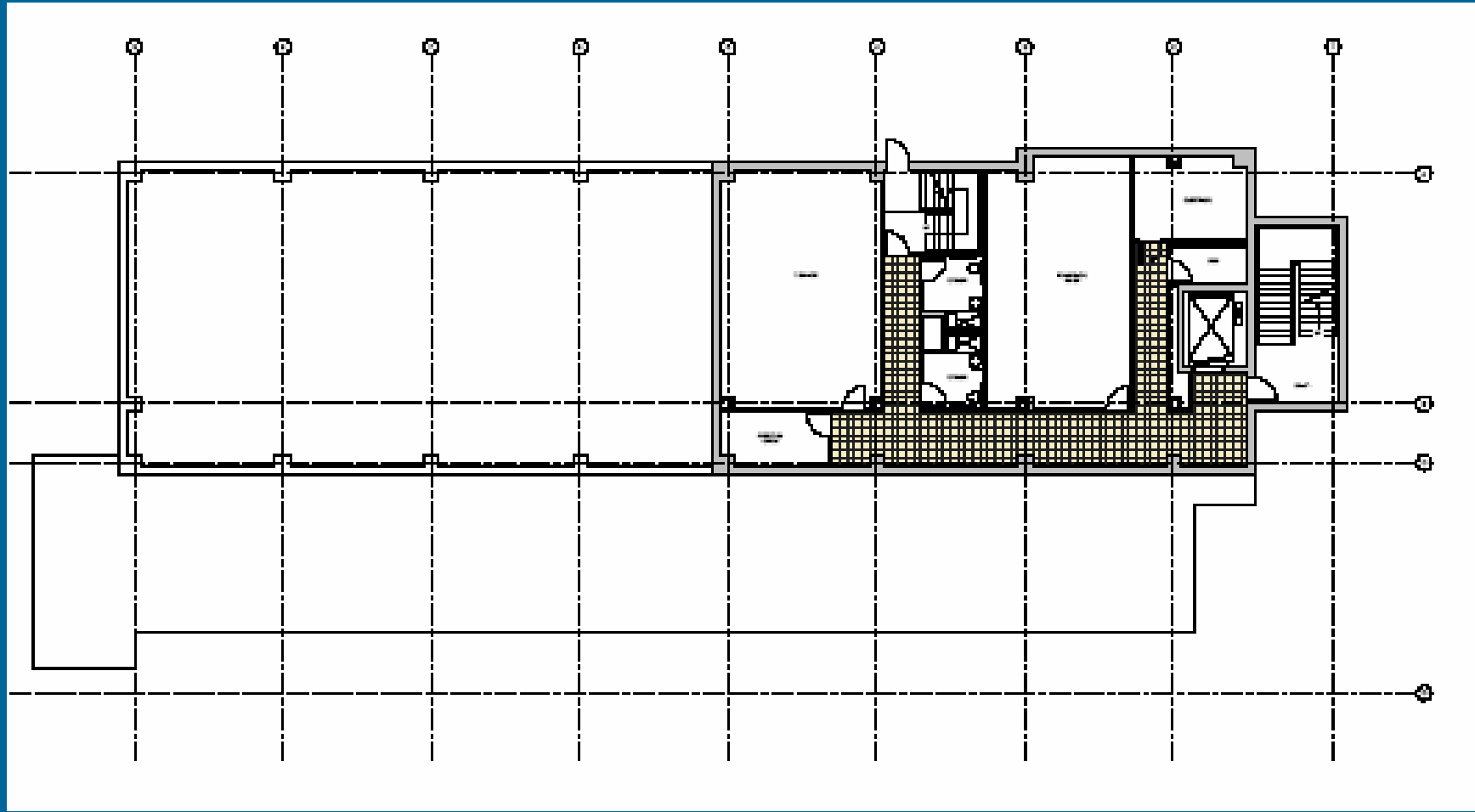
## IBS SPACE NEEDS SUMMARY

IBS PROGRAMS & CENTERS		Total ASF
A. Administration		1,140
B. Computing & Research Services		2,660
C. Environment & Society		2,730
Hazards Center		2,060
Hazards Library		1,950
D. Health & Society		1,380
E. Political & Economic Change		2,280
F. Population		2,930
G. Problem Behavior		7,640
Center for the Study & Prevention of Violence	Incl. in Problem Behavior	
H. Shared Space		6,465
<b>Total Program ASF</b>		<b>31,235</b>
Building Gross Factor	68% Efficiency	14,695
<b>Total Building GSF</b>		<b>45,930</b>

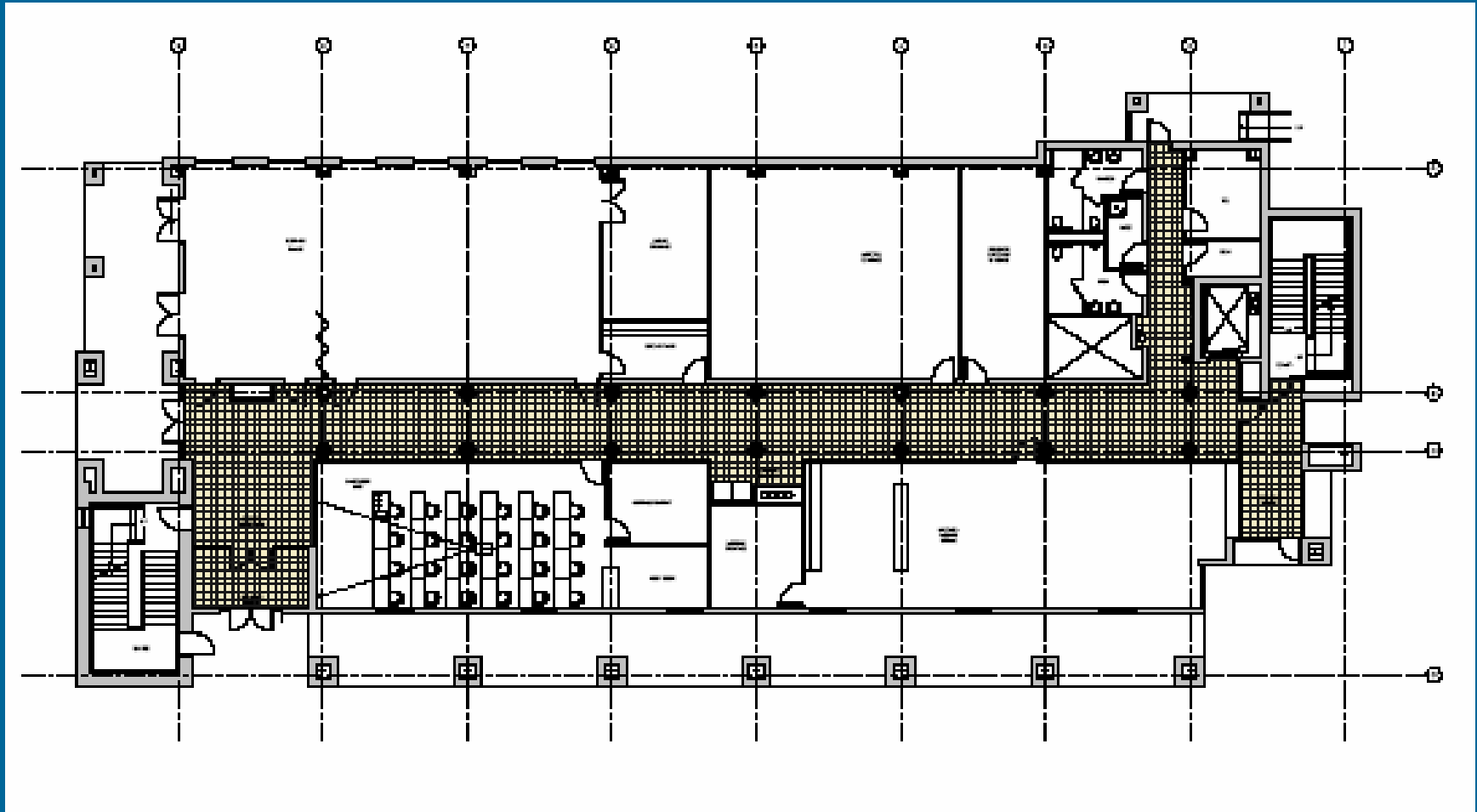
# Planned Spaces



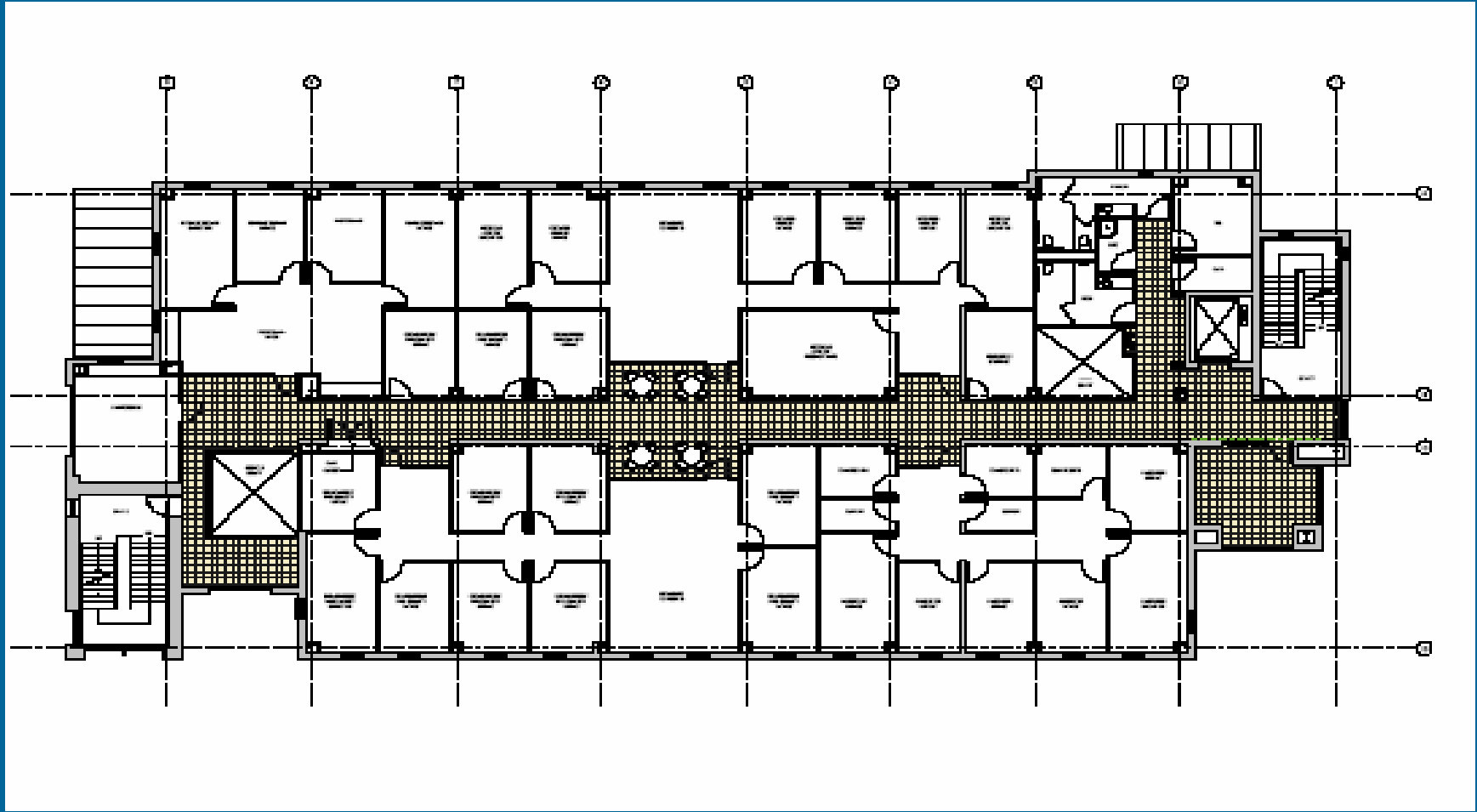
# Planned Spaces



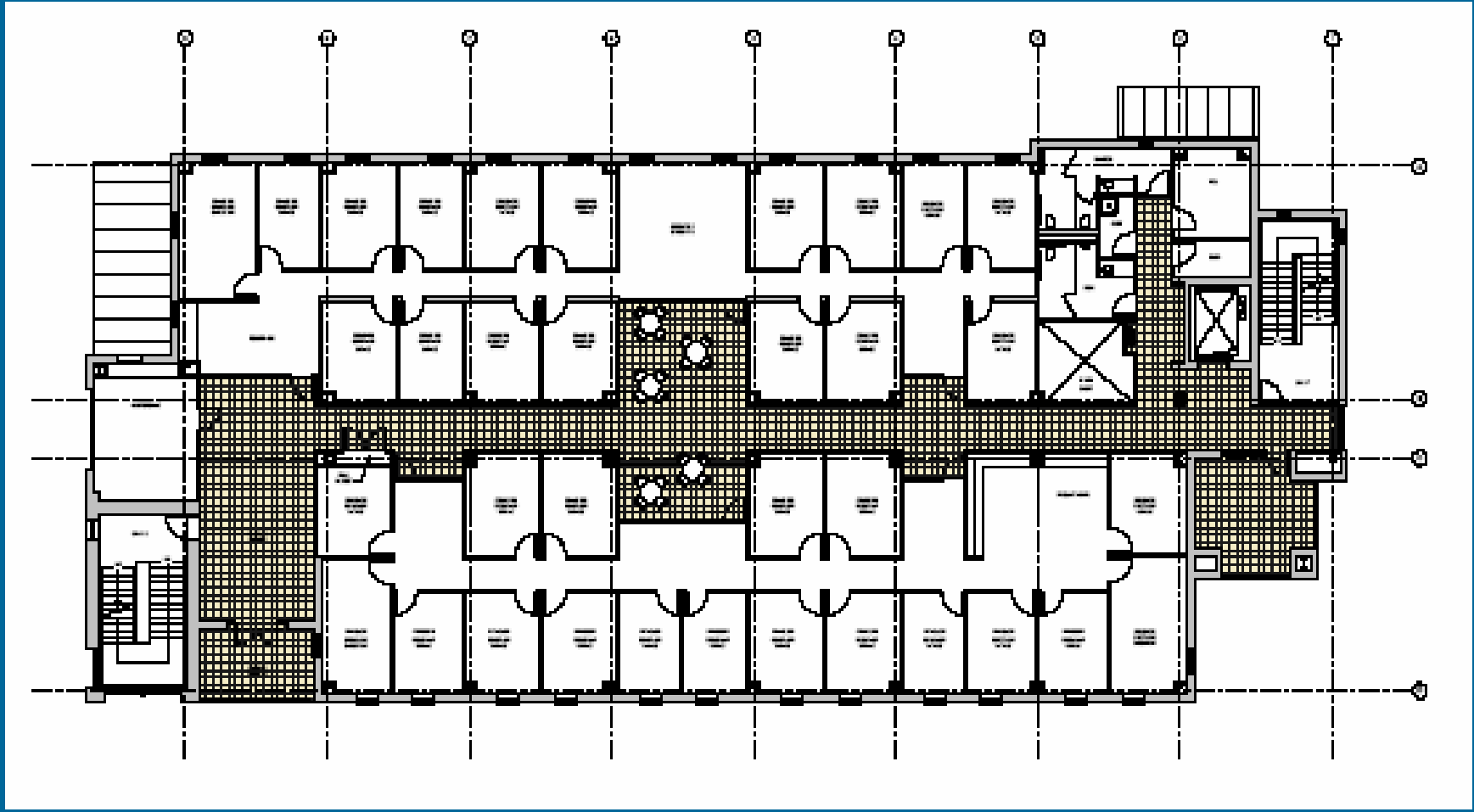
# Planned Spaces



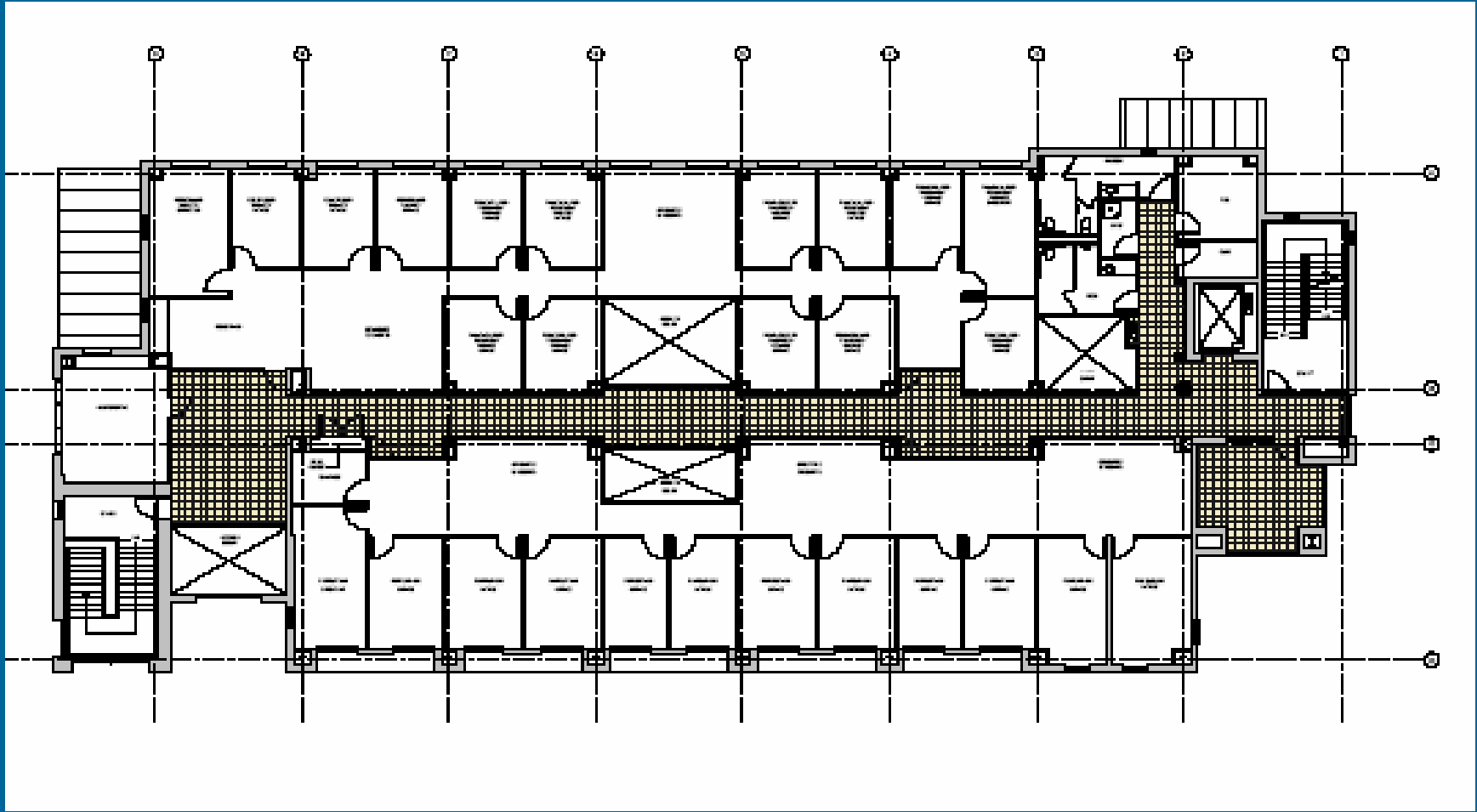
# Planned Spaces



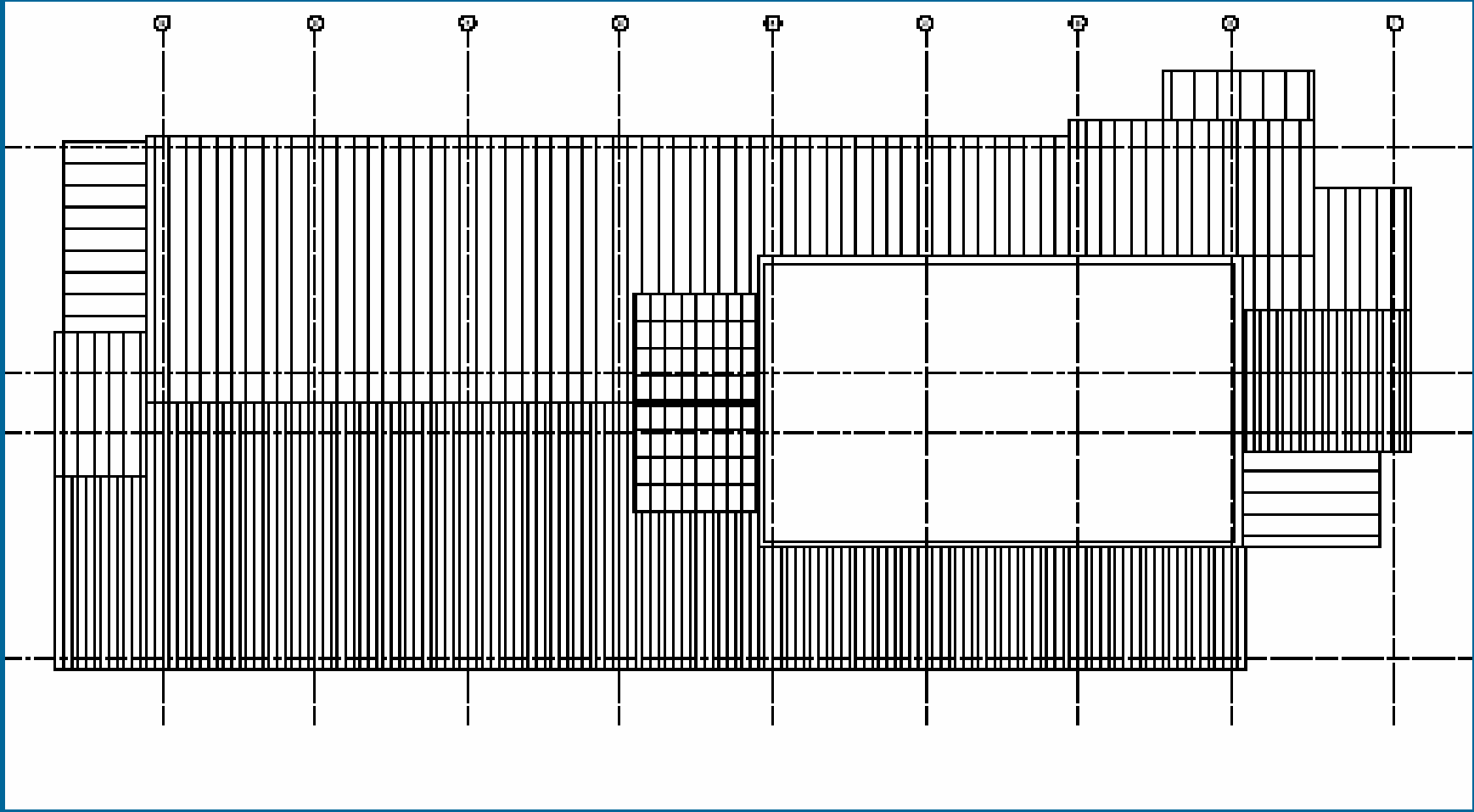
# Planned Spaces



# Planned Spaces



# Planned Spaces





# Planned Spaces



# Planned Spaces



---

# Planned Spaces

---

# Planned Spaces



# Planned Spaces



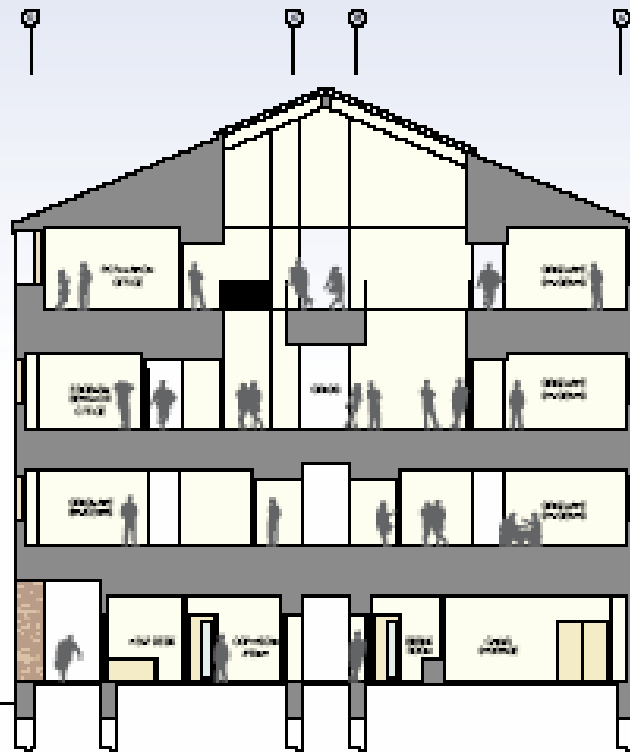
# Planned Spaces



# Planned Spaces



# Planned Spaces





# Schedule

- ❑ Initiate Program Plan March, 2007
- ❑ BCPC Program Plan Approval May 10, 2007
- ❑ CEC Program Plan Approval May 19, 2007
- ❑ Regents Capital Planning Committee May 31, 2007
- ❑ Board of Regents Program Plan Approval June 28, 2007
- ❑ CCHE Program Plan Approval July 16, 2007
- ❑ CDC Approval October 17, 2007
- ❑ JBC Approval January 9, 2008
- ❑ Design Start January 15, 2008
- ❑ Design Completion December 1, 2008
- ❑ Open Bids February 15, 2009
- ❑ Construction Start March 15, 2009
- ❑ Construction Completion May 12, 2010
- ❑ Occupancy June 1, 2010

---

# Other Considerations

- Chilled Water and Steam
- Parking
  - Long term



---

Questions?

---